



CAP LAMPS

Northlands Business Park
Northriding
Johannesburg
South Africa

P.O. Box 928
Honeydew, 2040

Tel.: +27 (011) 704-7088
Fax: +27 (011) 704-7019

e-mail: sales@pjtech.co.za
www: www.pjtech.co.za

2 in 1 MINER'S CAP LAMP & MISSING PERSON LOCATOR



SMARTLIGHT-05-M1

BASIC FEATURES:

- 5 LEDs (Main, 3 x Additional & Emergency)
- Detectable through up to 30m of rock-wall
- **1000 battery charges guaranteed (+-4 years)**
- Cap Lamps Management System - CLaMS
- Vertical adjustment of light beam
- Provides light with damaged / cut cable
- Stainless steel charging racks
- **Optional: Monitoring Software, RFID Tag**

LED based cap lamp Smartlight-05-M1 is equipped with a MISSING PERSON TRANSMITTER that's mounted within the cap lamp. It allows the rescue search team to locate the users in life threatening situations such as rockfalls or rock bursts thus shortening the rescue time. It is achieved by use of MISSING PERSON FINDER MinSearch-08. The signal from the cap lamps is being transmitted is at all times, up to 7 days after the battery charge designated for the light has been used.

MISSING PERSON FINDER – MINSEARCH-08



MINSEARCH-08

MISSING PERSON FINDER MinSearch-08 is able to locate the distance and direction of trapped miners behind rock walls of up to 30m in sphere radius.



More information at – www.pjtech.co.za

Cap Lamp Technical Specifications

Description	Data	
Rated voltage of battery	3,6 V	
Battery	3 x NiMH 9,5 Ah	
Battery life	1000 cycles - GUARANTEED	
Source of light:	Main light MLED	diode LED 1W
	Additional light ALED	diode LED 0,07W x 3
	Emergency light ELED	diode LED 0,07W
Light source life	100,000 hrs	
Battery usage from full charge	MLED only at 100%	15 hours
Example of battery usage in sequence (from full charge of battery)	MLED at 100%	10 hours then
	MLED at 20%	7 hours (80% battery capacity depleted) then
	ALED or ELED	7 hours or 20 hours
Position transmitter minimum operation (from full charge of battery)	150 hours (over 6 days)	
Maximum charging period	12 hours (from completely discharged)	
Light intensity at 1m from the lamp	+ - 3000 lux (after 8 hours of 100% usage)	
Light beam angle	120 deg	
Ingress protection	IP 65	
Level of protection explosion-proof	Ex ia I + H2; Certification No: FTZU04ATEX0299	
Dimensions	140 x 130 x 48mm	
Head diameter	72mm	
Cable length	1500mm	
Working temperature	0°... + 40°	
Weight	1,3 kg	

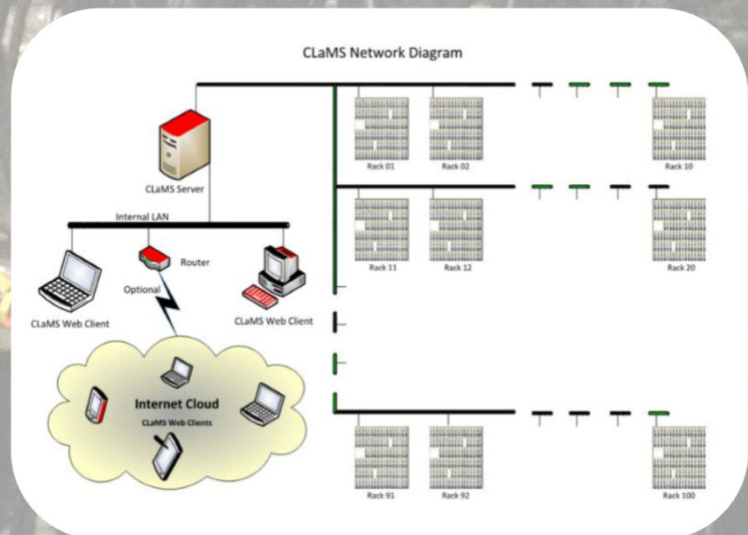
Battery Chargers



AVAILABLE BATTERY CHARGER:

- Single desktop
- Rack of 5
- Rack of 51 (with provision for rescue packs)
- Rack of 102 (with provision for rescue packs)

Cap Lamp Management System - CLaMS



More information at – www.pitech.co.za